



Compiere ERP & CRM Installation Instructions Windows System - EnterpriseDB

Compiere Learning Services Division

Table of Contents

Compiere ERP & CRM Installation Instructions – EnterpriseDB – Windows System

Compiere ERP & CRM - Installation Instructions – EnterpriseDB **3**

Prerequisites	3
Database Installation	3

Compiere 3.0 New Installation Instructions **8**

Java Installation	8
Edit the Path	8
Download Compiere	8
Complete Server Setup	13
Start Compiere	13

Compiere ERP & CRM - Installation Instructions – EnterpriseDB

Prerequisites

- Database approved Windows Operating System: Windows 2000, Windows NT, or Windows XP
- Disk Space: > 5 GB (includes database)
- Recommended: Hardware RAID 10
- Memory: > 512 MB - Recommended: > 1 GB
- TCP/IP connection to Clients

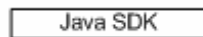
Hint: It will ease the installation tremendously, if you have your network set up with DNS server and a domain (actually a must for non-Windows environments). Check with your system administrator - do NOT use IP addresses, use names.

Database Installation

1. Install Database



2. Install Java



3. Download Compiere

unzip / tar



4. Setup Compiere

RUN_setup



5. Complete Server Setup

RUN_Server2



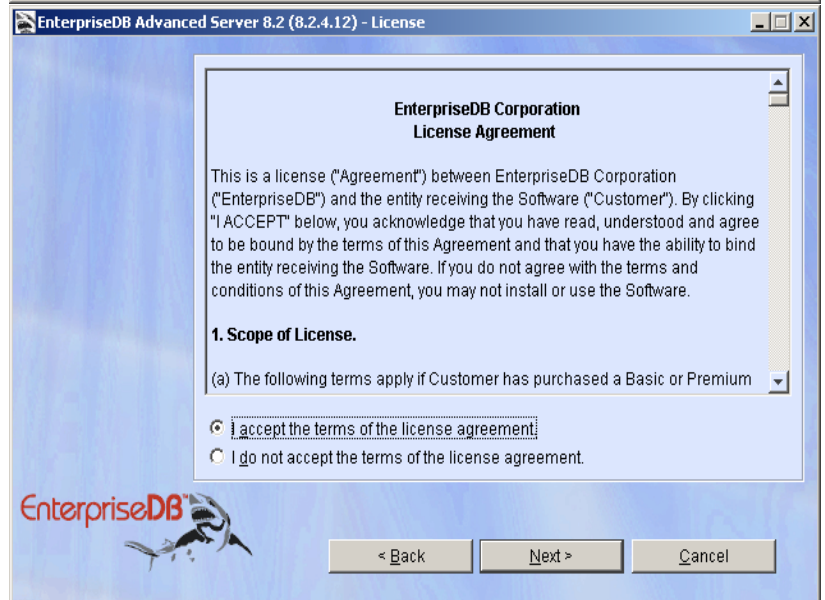
1. Install Database – this document will use EnterpriseDB 8.1.

- 1) First, login as the Administrator or someone in the Administrator group.
- 2) Get the EnterpriseDB from the following website:
<http://www.enterprisedb.com/products/download.do> Make sure download the 'EnterpriseDB Advanced Server for Windows'
- 3) Download the executable file appropriate for your OS.

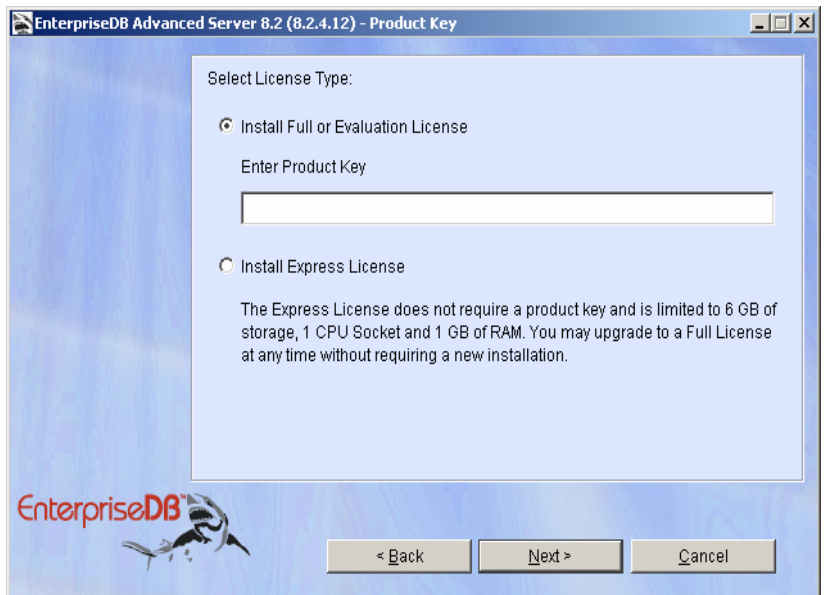
- 4) The welcome page displays.
Hint: you may be using a later version.
- 5) Select the Next button to continue with the Installation.



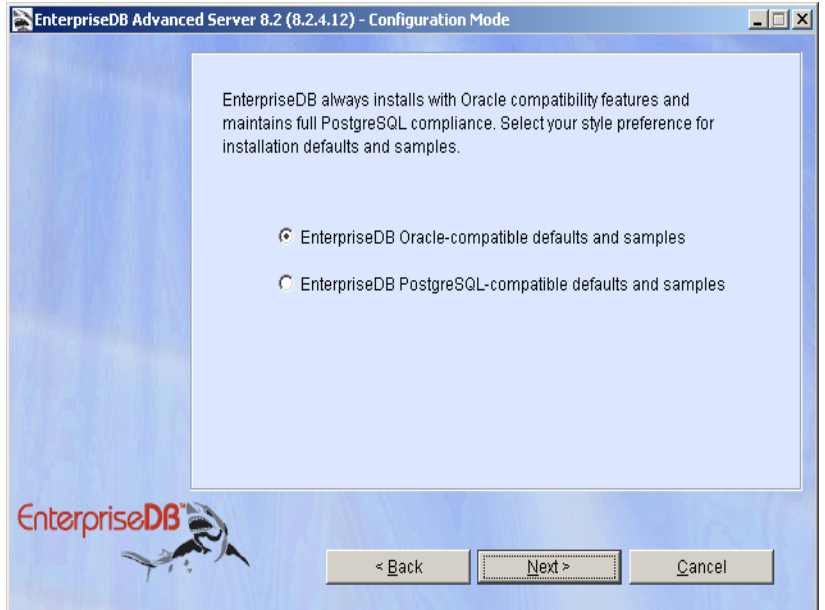
- 6) Review and accept the License agreement.
- 7) Then select the Next button to continue.



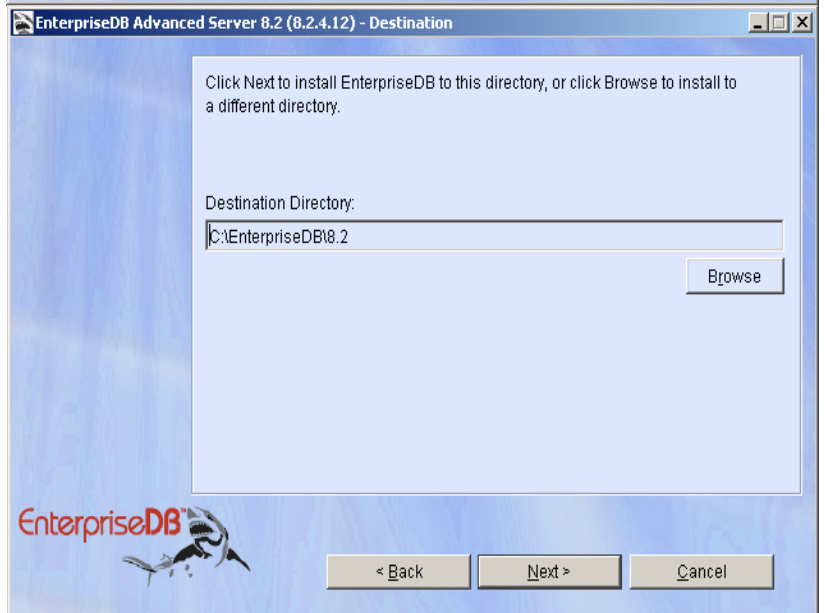
- 8) Provide a Product key for either the Full or Evaluation License of EnterpriseDB or simply select the Express License Option.
- 9) Select the Next button to proceed.



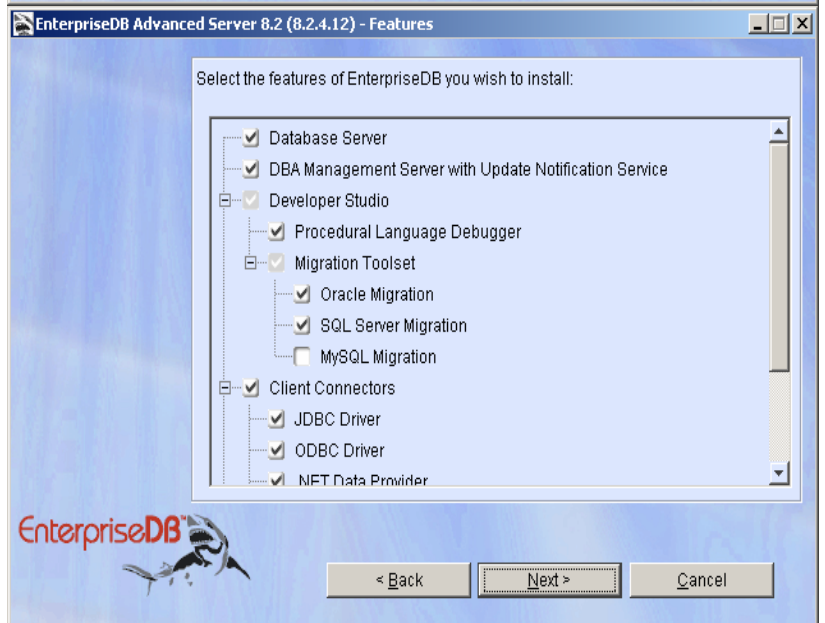
- 10) Select the Oracle-Compatible defaults and samples option.
- 11) Select the Next button to continue.



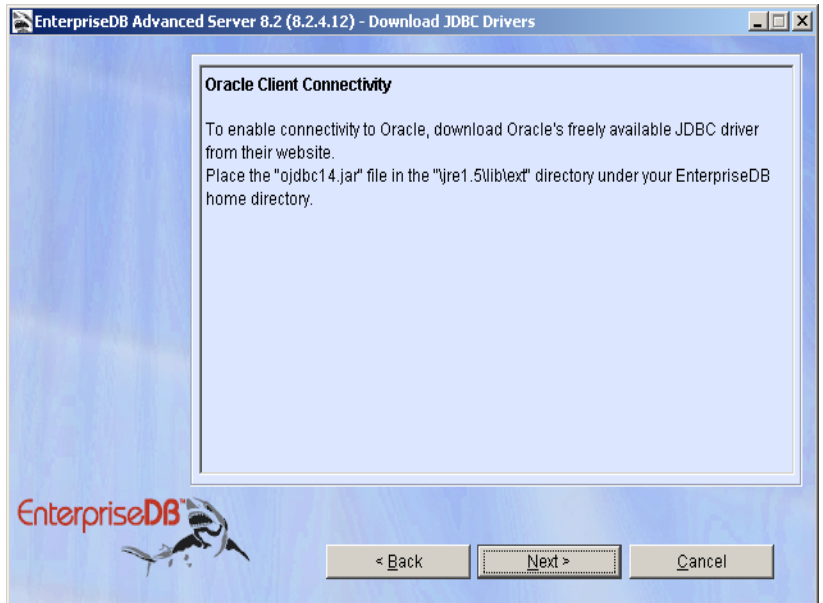
- 12) Select the destination folder by selecting the Browse button.
Hint: This document will assume C:\ is the selected directory.
- 13) Select the Next button to continue.



- 14) Under EnterpriseDB features, Accept the default selections.
- 15) Select the Next button to continue.



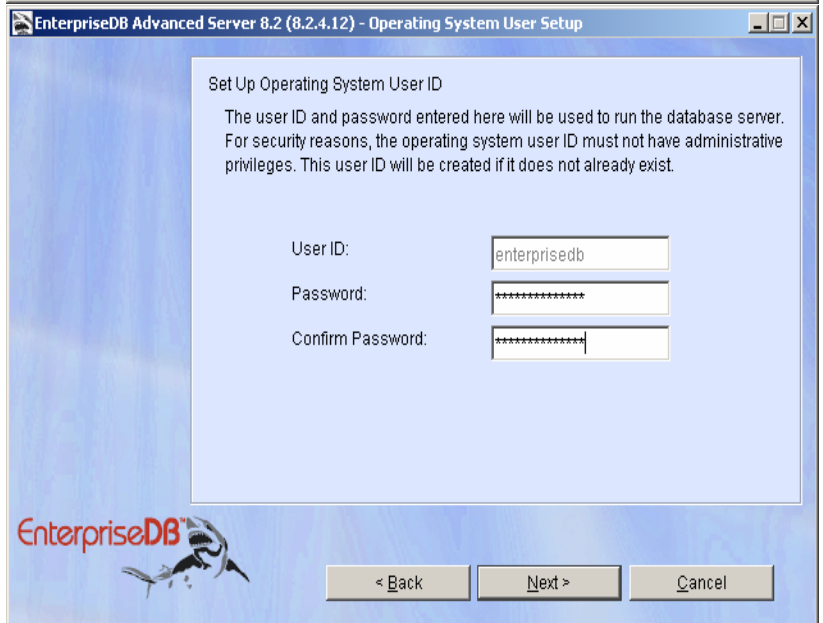
- 16) Take note of the following instructions provided by EnterpriseDB on Oracle Client connectivity.
- 17) Select the Next button to proceed.



- 18) Enter and confirm a User ID and Password for the System Administrator.

Hint: The User ID and Password entered here will be used to run the Database Server.

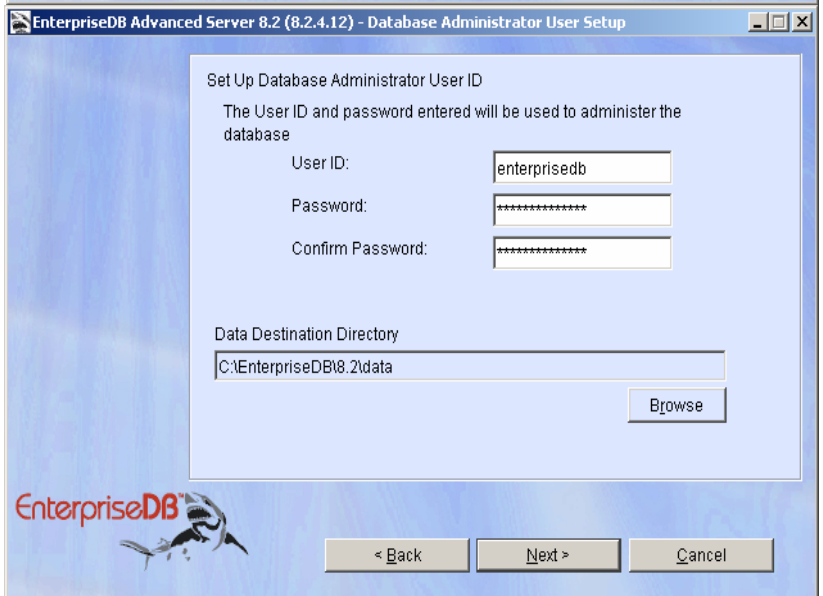
- 19) Then select the Next button to continue.



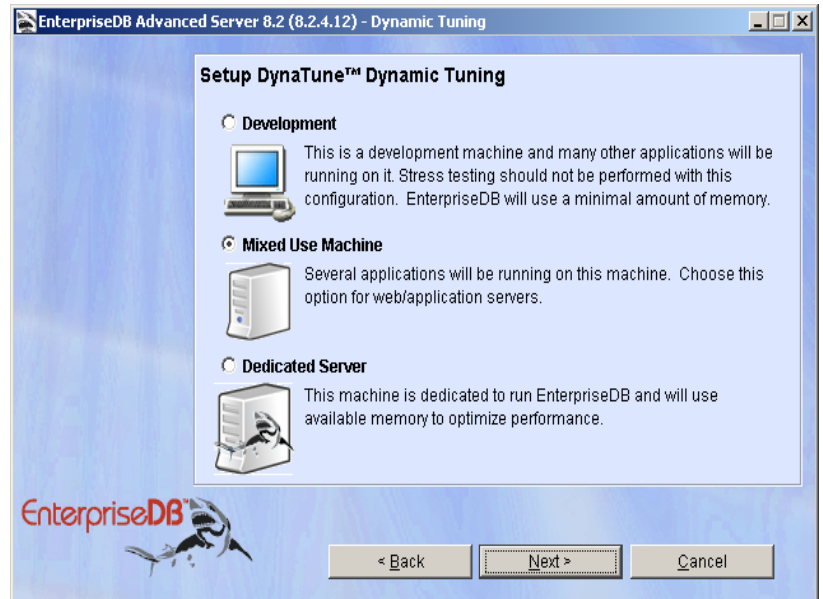
- 20) Next, enter and confirm a User ID and Password for the Database Administrator.

Hint: It is acceptable to use the System Administrator Password entered in Step 17. (This is optional)

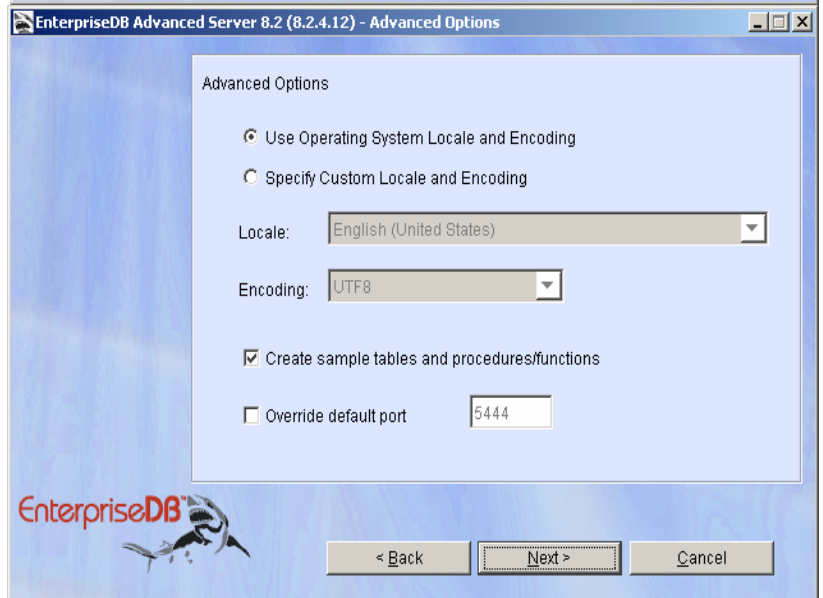
- 21) Select the Next button to continue.



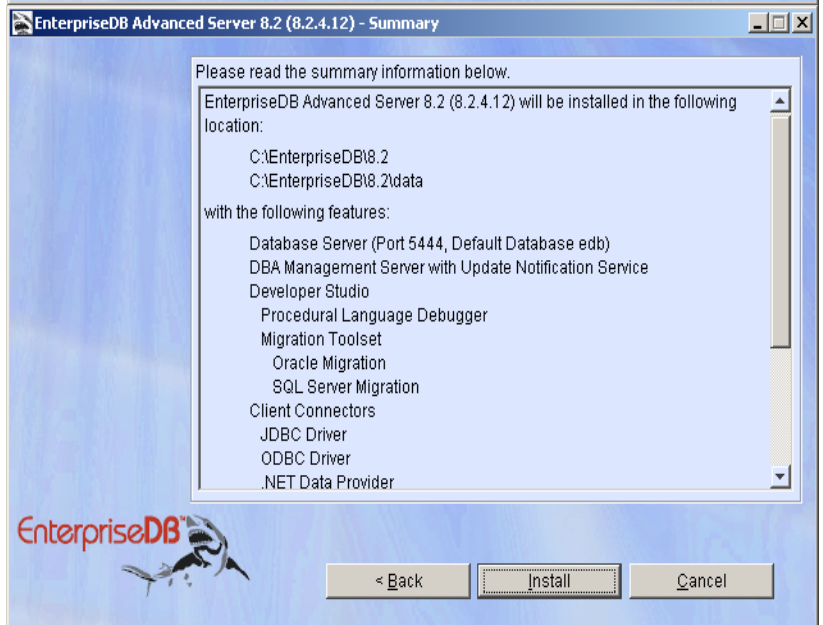
- 22) Select the appropriate option for Dynamic Tuning.
- 23) Select the Next button to continue.



- 24) Under Advanced Options, accept the default options.
- 25) Select the Next button to proceed.

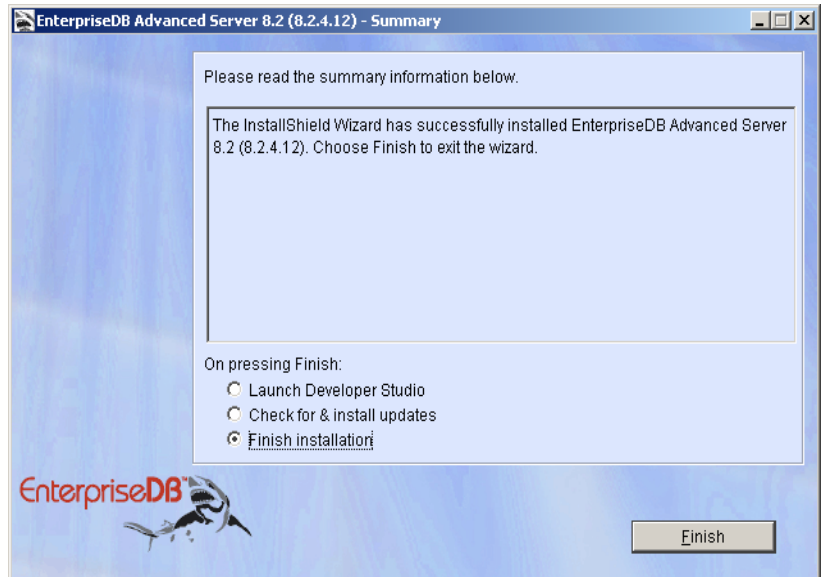


- 26) Review the Installation Settings. Select the Back button to make changes if necessary.
- 27) If the Installation settings are correct, select the Install button to start the Installation.



28) When the Installation is complete, the following confirmation window will display:

29) Check the Launch Developer Studio Option and select Finish to complete the Installation.



30) Once the Developer Studio opens, enter the System Administrator User ID and Password entered in step 17.
Note: This confirms the Database Installation.

Compiere 3.0 New Installation Instructions

Java Installation

1. Download and install [Sun Java 1.5.0](#) (SDK) – also known as Sun Java JDK, Update 12, or a later version.
Note: The Compiere Server requires the SDK (not just JRE).

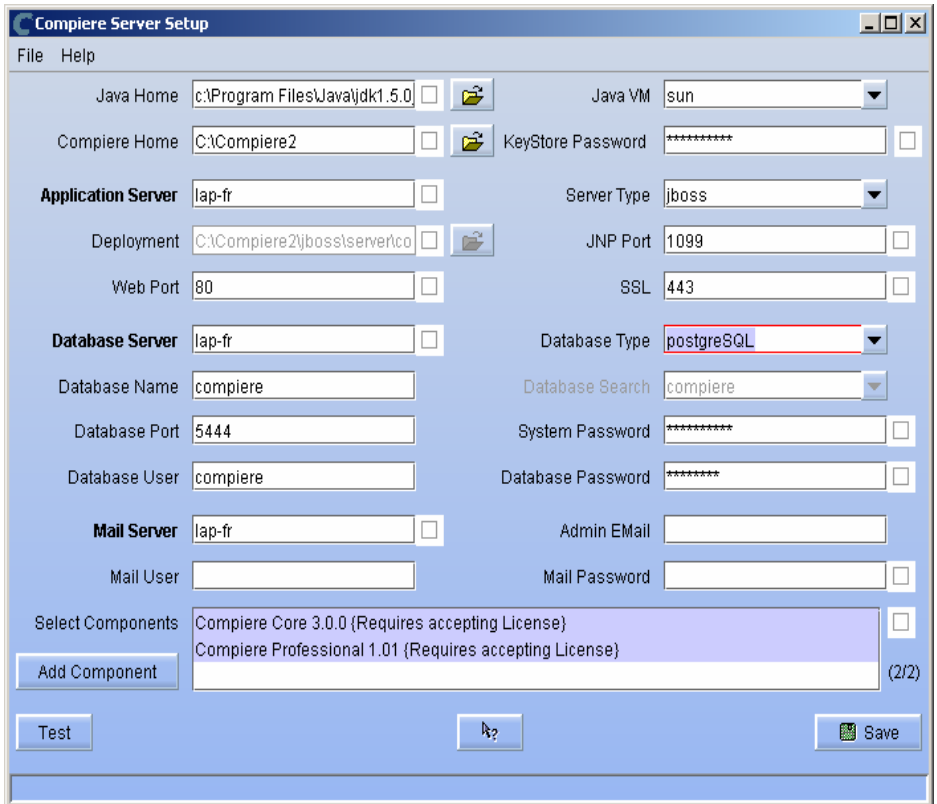
Edit the Path

2. Add EnterpriseDB path into PATH
 - 1) Go to Control Panel > System >Advanced > Environment Variables.
 - 2) Add EnterpriseDB path to the end of the PATH environment variable (e.g. C:\EnterpriseDB\8.1\dbserver\bin)

Download Compiere

3. Install /Setup Compiere Server (this includes the Client as well)
 - 1) Download the current version of Compiere: [Download Compiere](#). (3.0 or higher)
 - 2) Extract the .zip file. The steps shown assume that you extract to the root directory, resulting in a COMPIERE_HOME of C:\Compiere2 in Windows or \Compiere2 in Linux.
 - 3) Verify that the bin directory for your database executables is included in the PATH. Also, if using Oracle XE on Linux, run \$ORACLE_HOME/bin/oracle_env.sh
 - 4) Execute the script \$COMPIERE_HOME/RUN_Setup.
Note: if the following window does not display, please ensure that the following are updated.
 - Add the folder where you have installed JKD 1.5 at the beginning of the **PATH** system environment variable.
 - Set the **JAVA_HOME** system variable to the location of your java installation (e.g., 'C:\Program Files\Java\jdk1.5.0_12')
 - Set the **COMPIERE_HOME** system variable to the path of your Compiere installation (e.g., 'C:\Compiere2')

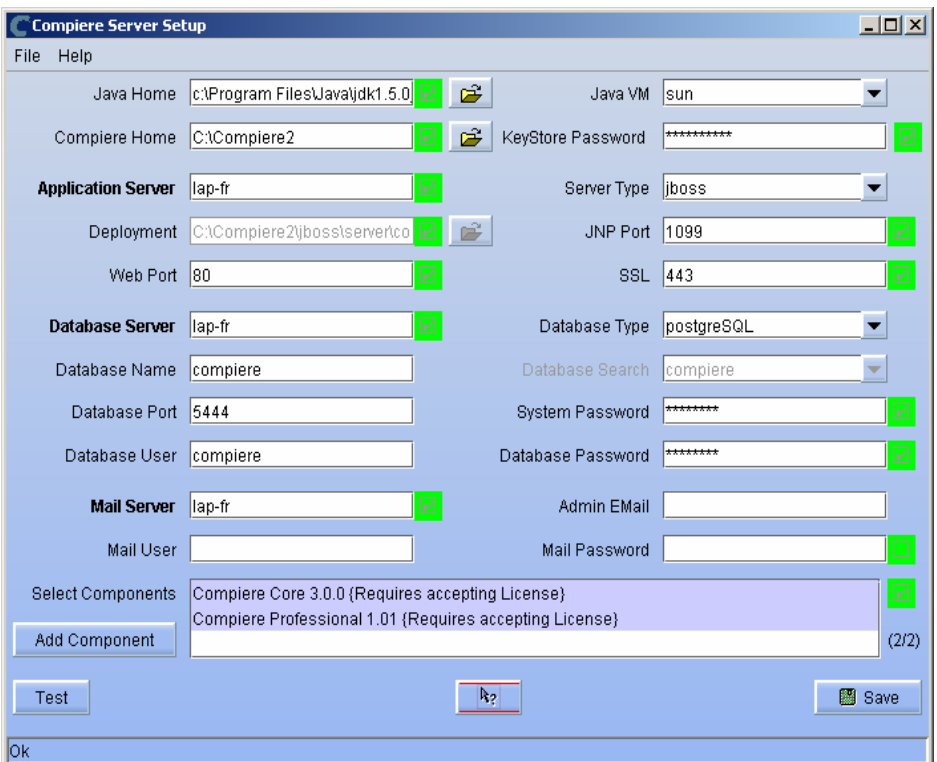
- 5) Select Database Type of postgresSQL.
- 6) In System Password, use the Database Administrator User password.
- 7) For Database Password, use 'compiere' (or any password.)
- 8) Enter or update the Parameters as necessary.
- 9) For Server Names, i.e., (Application, Database and Mail) use the DNS name of the server. **Hint:** Do not use localhost (127.0.0.1) or IP address.
- 10) Select the Help button, for information on any field



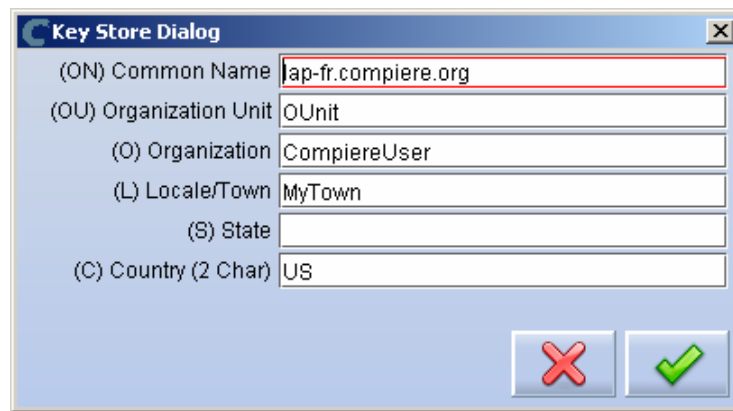
- 11) Select the Components to install. Compiere Core 3.0 is the main component that must always be installed, but you may choose additional components provided by Compiere or any of our authorized partners.

Note: To install additional components after you have already installed or migrated to the latest Compiere Core version, you must select the Compiere Core component plus any additional components that you wish to install, and then run Migration.

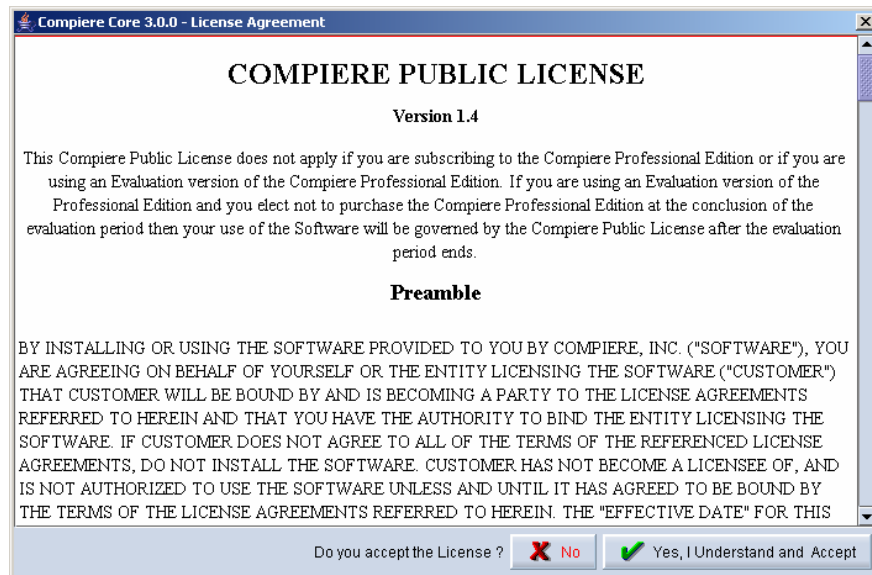
- 12) Select the Test button to check the parameters.
Note: Parameters must be verified in order to save
- 13) If an entry is unverifiable, it will display with a red X. Correct the entry and re-select Test/Save.
- 14) Once all fields are verified, click the Save button to proceed.



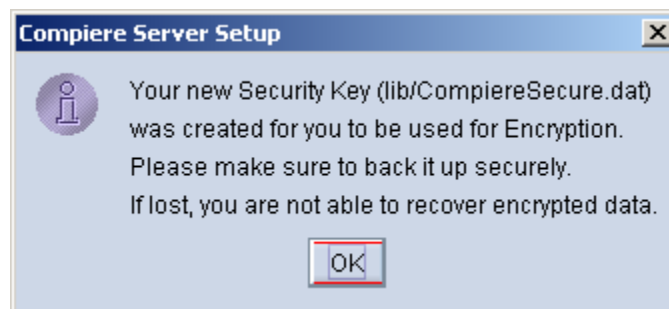
- 15) At the prompt enter your company information as appropriate and verify that the common name is the address of your application server. Once all fields are complete, click ok to continue.



- 16) Next, read and accept the license agreement.
Hint: You might get more than one license agreement, depending on the components that you are installing.

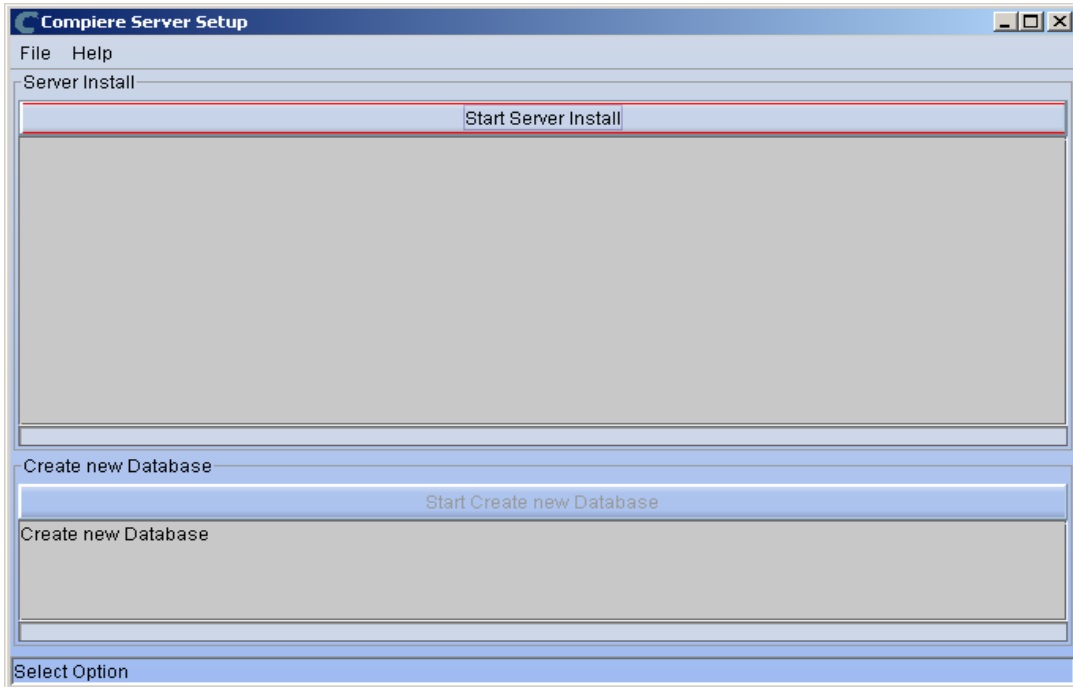


- 17) A default security key will be generated, click 'Ok' to continue.



- 18) After accepting the license agreement the following window will display:

19) After accepting the license agreement the following window will display:



20) Select Start Server Install.

21) Once the Server install is complete, select Create New Database.

Note: If you already have a Compiere database in your system, you will be presented with a split panel after 'Start Server Install'. Click the left panel if you want to replace the existing database with the new database.

Warning: If you choose to replace the existing database, all data in the existing database will be removed.

22) Verify that you see a 'Build Successful' and '***Finished' message at the end of this step.

LICENSE VALIDATION

If you only intend to use the Open Source Edition of Compiere 3.0, you may skip steps 21 and 22.

For customers with a valid support contract with Compiere, this is a required step to ensure that the features associated with the support level are enabled. If you are a customer and do not have a web store login, please contact your system administrator or Compiere Support first. If you are not a customer and would like to obtain a trial license for the Professional Edition, use the following steps to register with Compiere:

- Go to www.compiere.com/wstore, and click Login.
- If you are a new user, click 'New User' and provide the required information.
- Then Login to the web store. If you are a new user you will have to validate your e-mail address by providing the validation code that was sent to your email inbox.

23) Provide the following information exactly as it was registered in the Compiere Web store and click Check License to validate your asset information.

- System Name (name provided in the web store registration)
- Registered Email (email address provided in the web store registration)
- Password (web store password)

Tip: During the Next steps, do not click Start Migration; simply Check License and Close the window. Notice that internet access is required to validate the license information.

24) To verify your license, click the “Check License” button

Compiere Support 3.0.0

System Name ?

Registered EMail ?

Support EMail

Target URL jdbc:thin:@//lap-fr:1521/x1521/x

Support Expires

System Status Evaluation

Password *

Support Units 0

Supported Users

Support Level

Existing Support Contract

Source URL file:/C:/Compiere2/data/compiel reference reference

Core: Not Licensed
Compiere Professional: Not Licensed

Check entries and press OK to submit.

Start Migration

Check License

25) Review that your license information has been validated

Compiere Support 3.0.0

System Name System Name

Registered EMail email@compiere.org

Support EMail

Target URL jdbc:thin:@//lap-fr:1521/x1521/x

Support Expires 2010-12-31 00:00:00.0

System Status Evaluation

Password *****

Support Units 0

Supported Users

Support Level

Existing Support Contract

Source URL file:/C:/Compiere2/data/compiel reference reference

Core: Licensed (pdf licensed), Expires 12/31/2010 (in 1130 days), Seats: 1, Status: U
Compiere Professional: Compliant, Expires 12/31/2010 (in 1130 days)

Contacting Compiere Support ...
Core Information updated.
Compiere Professional Information updated.

Start Migration

Check License

26) After Compiere Professional license has been verified, click the “X” to close the window.

Note: If you get the error “You do not have an appropriate license to use this feature” when starting the web UI, then login to the server and execute `utils/RUN_Support` to validate again your license and restart the application server.

27) Close any additional Setup and /or Support windows.

Complete Server Setup

4. Start the Compiere Application Server

- 1) You can now start the JBoss based Compiere Application Server via **RUN_Server2** in the `$COMPIERE_HOME/utills` directory.
- 2) There should be no errors. Check the logs in `$COMPIERE_HOME/jboss/server/compiere/logs` to verify this.
- 3) Common problems include ports already in use
 - 17:41:09,085 ERROR [NamingService] Could not start on port 1099
java.net.BindException: Address already in use: JVM_Bind
at java.net.PlainSocketImpl.socketBind(Native Method)
 - There is another program using port 1099; Stop it and restart Run_Server2 or setup Compiere to use another port in RUN_setup.

Likely port conflicts:

- 80 - You have some other web server running (or you need privileges under Linux/Unix)
- 8080 - The Oracle Database uses that
- 1099 - Often used by IDEs for debugging

Start Compiere

5. Start the Compiere Client

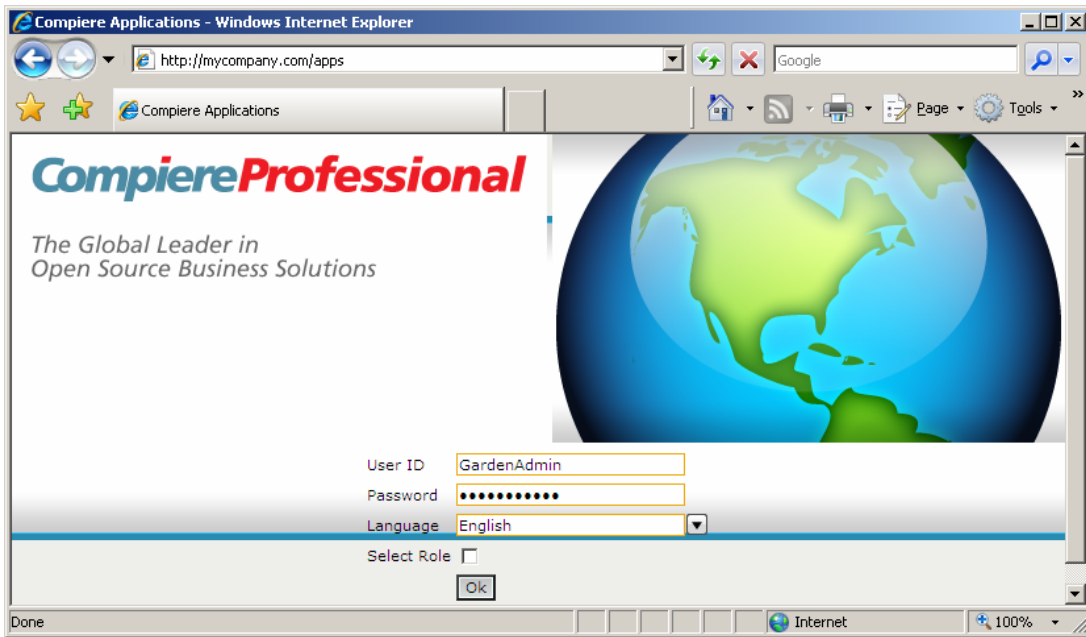
- 1) Start the Swing client by double clicking on the Compiere shortcut in your desktop or by executing **RUN_Compiere2** from the `$COMPIERE_HOME` directory.

Default users and passwords for the sample Garden World application.

- GardenUser/GardenUser
- System/System
- GardenAdmin/GardenAdmin
- SuperUser/System



- 2) Alternatively, if you have access to the Professional Edition, you can launch the application from the browser by using the URL: <http://server:port/apps> (e.g. <http://mycompany.com:80/apps>)



Information: For additional information see the Compiere home page <http://www.compiere.com>.